
ASIA EDUCATION FOUNDATION

AT ASIALINK

THE UNIVERSITY OF MELBOURNE

STRATEGY

2020 - 2023

ACKNOWLEDGEMENT

WE ACKNOWLEDGE THE TRADITIONAL CUSTODIANS OF OUR LANDS AND WATERWAYS.

WE PAY RESPECTS TO ELDERS PAST, PRESENT, AND EMERGING.

ASIA EDUCATION FOUNDATION IS LOCATED ON THE LAND OF THE WURUNDJERI PEOPLE OF THE KULIN NATION WHO TAKE THEIR NAME FROM THE WOWURRUNG LANGUAGE DESCRIBING THE GRUB FOUND IN OR NEAR EUCALYPTUS TREES ALONG THE YARRA RIVER. WURUNDJERI ARE THE 'WITCHETTY GRUB PEOPLE'. WE DEEPLY RESPECT THEIR HISTORY AND CULTURE AND ACKNOWLEDGE THEIR CONTINUING CONNECTION TO THE LAND AND WATERS.

TABLE OF CONTENTS

ASIALINK VISION & AEF MISSION

THE STRATEGIC CONTEXT

KEY PILLARS

THE STRATEGIC OBJECTIVES & GOALS

AEF ENABLERS

OBJECTIVES, TACTICS & OUTCOMES

AEF OUTCOME LOGIC

AEF INTERCULTURAL LEARNING FRAMEWORK

AEF PROGRAM AREAS

ABOUT ASIALINK & AEF

ASIALINK VISION & AEF MISSION

AEF is an initiative of Asialink at The University of Melbourne.

ASIALINK

Asialink drives creative engagement between Australia and Asia to build a strong shared future.

ASIA EDUCATION FOUNDATION

AEF equips educators and students with the intercultural learning and global perspectives to navigate a shared future with Asia-Pacific.



THE STRATEGIC CONTEXT

A truly 'world-class' education must include knowledge, understanding, and skills to engage with the world.

Culturally diverse Australia is well-placed to advance intercultural learning with the rich diversity of Asia-Pacific nations in our region. Through languages, studies, partnerships, and real-world experiences, our educators and students can grow stronger relationships with our geographic neighbours locally and globally.

Asia Education Foundation (AEF) has always focussed on Asia and increasingly our work has expanded across the Pacific to truly encompass our region and support Australia's strategic priorities.

For decades AEF has nurtured the kinds of relationships, understandings, networks, and 'soft power' that creates lasting benefits to communities and economies. With young Australians experiencing ever more increasing diversity in their personal and working lives, there will be a high reliance on cross-cultural capabilities and networks. Australian education must provide all students with the awareness and experiences to navigate these complexities.

OVER THE NEXT THREE YEARS, AEF WILL EMBRACE UNIQUE OPPORTUNITIES TO CO-DESIGN CONTEMPORARY LEARNING ACROSS THE ASIA-PACIFIC. EQUIPPING EDUCATORS AND STUDENTS WITH INTERCULTURAL LEARNING AND GLOBAL PERSPECTIVES IS KEY TO NAVIGATING A SHARED FUTURE.

Current global challenges demand that we must do even more to cultivate intercultural learning. Our educators and students need the kind of intercultural learning that advances their understanding to combat intercultural assumptions, stereotypes, and prejudice. They need the kinds of intercultural skills and capabilities that nurture greater empathy, respect, and equip them to reach mutual resolutions across different cultural contexts.

AEF's strategic plan will deliver on two goals. One - to expand two-way engagement with Asia-Pacific education. Two - to increase education outcomes through intercultural learning.

AEF will seek to achieve our two-goals through five strategic objectives. The impact of these will drive greater awareness, knowledge, and capability leading to improved engagement with communities in the Asia-Pacific and improved education outcomes. This engagement will strengthen our advocacy for stronger and more sustained approaches in intercultural learning.

AEF can't do this alone. We will work with diverse partners, governments, organisations, and networks to build intercultural learning for all. We know that curriculum must move beyond a superficial focus on 'food, flags, and festivals'. We need investment building teacher capability and resources for curriculum areas like the Cross-curriculum priority of Asia and Australia's Engagement with Asia, and the Intercultural Understanding General Capability. The Alice Springs 'Mparntwe' Education Declaration sets a bold agenda around this context that AEF will amplify.

We call on education jurisdictions to:

- offer greater opportunities to link the curriculum with Asia-Pacific contexts
- invest in the professional learning of our school leaders and educators; and
- support more partnerships that create long-term relationships and collaboration with our regional neighbours.

Schools need to act to:

- develop leadership that prioritises intercultural learning and awareness across school communities
- engage students in deep intercultural experiences and networks; and
- link to key resources for educators and students on intercultural learning.

AEF stands ready to support the education sector to take these steps. World-leading organisations like the OECD have focused their research, assessment, and resources on global competence. That's because educators globally know that students at school today must develop global collaboration and intercultural understanding, stronger personal resilience and adaptability, and more innovative use of technologies. This shift has already started globally, and Australia must amplify the value of this work if we are to truly be world-class.

AEF will provide school leaders, teachers, and students with global perspectives and tools to amplify their intercultural skills and mindsets. We will connect Australian schools with more than 20 countries across Asia-Pacific, deliver leading-edge professional learning, innovative programs, and rich networks. AEF was established in 1992 as an initiative of Asialink at The University of Melbourne. AEF partners with the Australian Government, state and territory education jurisdictions, education professional associations, business, and philanthropy.

KEY PILLARS

AEF works with Asialink through its Arts, Business, Diplomacy programs and the Confucius Institute. AEF is supported by the AEF Council and The University of Melbourne.



INSIGHTS



CAPABILITIES



CONNECTIONS

ASIALINK

Asialink provides a unique platform to create, curate and share thought leadership, research and knowledge through diverse voices in our region.

Asialink supports people and organisations with immersive learning experiences to grow and scale their interest and skills to navigate successfully in Asia.

Asialink communities are continuously building relationships as we activate networks between sectors, people and places.

ASIA EDUCATION FOUNDATION

AEF provides global and intercultural perspectives to build stronger education policies, practices and curricula to engage with Asia-Pacific.

AEF builds intercultural mindsets and skillsets for school learning communities across Australia and Asia-Pacific.

AEF works with diverse partners to grow intercultural learning in schools and leverages networks in more than 20 countries across Asia-Pacific.

THE STRATEGIC OBJECTIVES AND GOALS

Asia Education Foundation (AEF) will provide school leaders, teachers, and students with global perspectives and tools to amplify their intercultural skills and mindsets. Our key partners in this work include Australian governments, education jurisdictions, professional associations, business, and philanthropy.

Developing new insights, resources, and activities on intercultural learning is a key underpinning of this strategy. We believe that more impactful work can be achieved by focusing on intercultural understanding and capabilities as two spheres of learning.

These connect with curriculum in Australia and support the collaborative work with many nations across Asia-Pacific. This strategy is our unwavering commitment to greater advocacy on intercultural learning and ensuring there are fewer barriers for schools accessing these experiences and resources.

AEF has two key goals which will be achieved through five strategic objectives for our work over the next three years.

OBJECTIVES

1. BUILD SCHOOL PARTNERSHIPS

2. EXPAND INTERCULTURAL LEARNING

3. GENERATE EDUCATION RESEARCH

4. AMPLIFY YOUTH VOICE

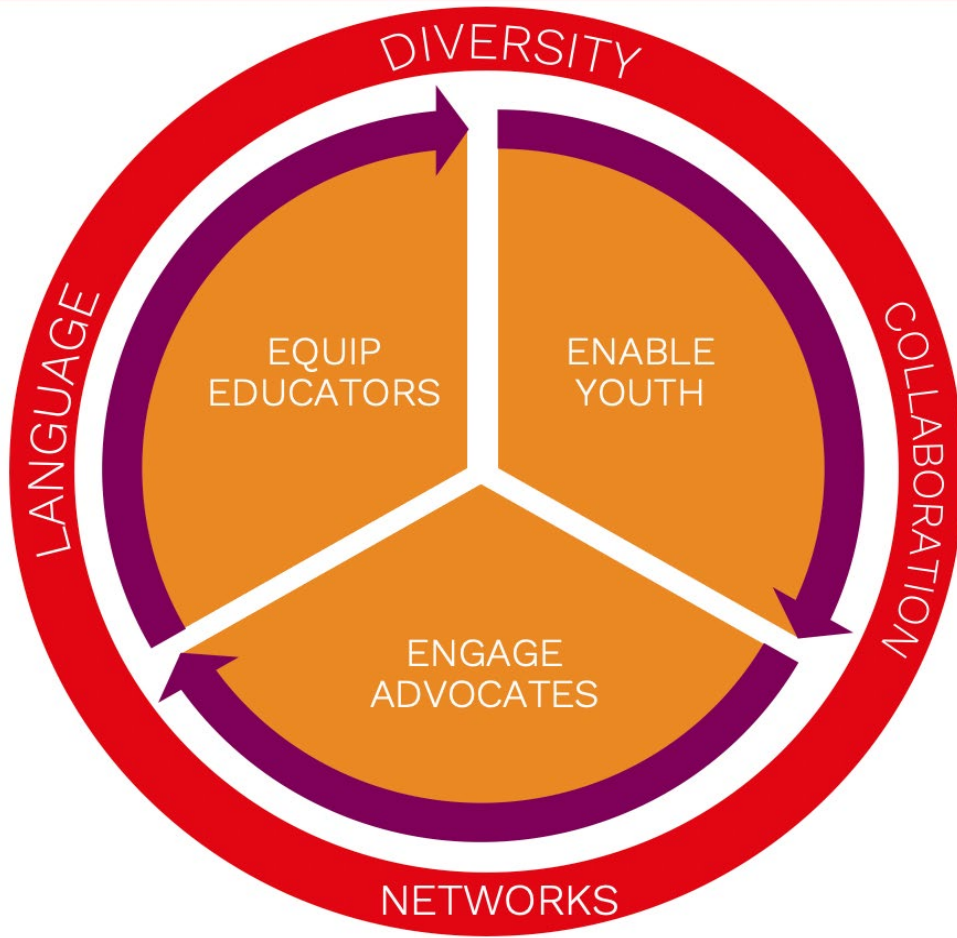
5. ACTIVATE ADVOCATES

GOALS

1. EXPANDED TWO-WAY ENGAGEMENT WITH ASIA-PACIFIC EDUCATION

2. INCREASED EDUCATION OUTCOMES THROUGH INTERCULTURAL LEARNING

AEF ENABLERS



AEF has three key groups that our work is focused on: Educators across Australia and Asia-Pacific; Young people; and Partners across government, education, business, and philanthropy.

The way in which AEF works with these three strategic groups is underpinned by a set of enablers that amplify and deepen the impact. These enablers include a clear and consistent approach to intercultural learning language and concepts; expanded emphasis on digital methods for program delivery and resources; securing strategic relationships with creative partners and forging wide networks across Asia-Pacific.

ENABLERS

INTERCULTURAL LANGUAGE

Clear and consistent approach to intercultural learning in education.

DIGITAL DIVERSITY

Expanded emphasis on digital methods for program delivery and curriculum resources.

PURPOSEFUL COLLABORATION

Strategic relationships with creative partners to drive new programs and opportunities.

WIDE NETWORKS

Empower and link leading and aspiring schools across Asia-Pacific.

APPROACHES

EQUIP

Equip educators and school leaders across Australia and Asia-Pacific with the intercultural thinking, planning, and teaching for stronger linked learning communities.

ENABLE

Enable youth to develop and express their intercultural knowledge, skills and attitudes, and activate the agency to create ideas for better communities locally and internationally.

ENGAGE

Engage advocates in education, government, business, research, and communications to support and partner on Asia-Pacific perspectives and intercultural initiatives.

OBJECTIVES, TACTICS & OUTCOMES

The success of these five objectives in driving expanded two-way engagement with Asia-Pacific, as well as increased education outcomes on intercultural learning for educators and students, requires a collective and co-ordinated effort. The shift to greater integration of technological tools and networks will be a core underpinning of this work.



OBJECTIVE ONE	BUILD SCHOOL PARTNERSHIPS	TACTICS	OUTCOMES
	<p>Build school partnerships across Australian education, especially in regional and rural areas, driving new relationships and learning outcomes with more than 20 Asia-Pacific nations.</p>	<p>AEF will:</p> <ul style="list-style-type: none"> Expand and sustain the Australia Asia-Pacific BRIDGE School Partnerships Program Leverage approaches with Asia-Pacific nations in educating on health, wellbeing and technology Develop the NEXUS digital school networks model Engage partners, education sectors and school leaders to invest in international school partnerships - especially in regional and rural Australia. 	<ol style="list-style-type: none"> Expanded opportunities for international education partnerships for Australian schools - especially in regional and rural areas. New approaches to technology-based school partnerships developed and piloted. Increased funding secured to support sustained school partnerships, including BRIDGE. Stronger Australian education relationships with Asia-Pacific established. Strengthened intercultural learning in schools.


OBJECTIVES, TACTICS & OUTCOMES



OBJECTIVE TWO	EXPAND INTERCULTURAL LEARNING	TACTICS	OUTCOMES
	<p>Expand intercultural learning by working with more than 500 schools annually across Australia in providing information, resources, and learning programs for educators and students.</p>	<p>AEF will:</p> <ul style="list-style-type: none"> • Embed the AEF Intercultural Framework across AEF programs • Expand professional learning opportunities for networks of schools • Enable youth agency through forums • Leverage Asia-Pacific networks to support AEF programs. 	<ol style="list-style-type: none"> 1. New intercultural learning resources and standards developed for schools. 2. Innovative curriculum-linked intercultural programs delivered for educators and students including renewed focus on the Cross-curriculum priority of Asia and Australia’s Engagement with Asia. 3. Increased opportunities for intercultural experiences provided for students. 4. Active Asia-Pacific education networks strengthened with Australian schools.

OBJECTIVE THREE	GENERATE EDUCATION RESEARCH	TACTICS	OUTCOMES
	<p>Generate education research through a dedicated research hub to provide school educators with access to intercultural learning evidence and perspectives to increase engagement with Asia-Pacific.</p>	<p>AEF will:</p> <ul style="list-style-type: none"> • Re-purpose existing AEF research for contemporary use • Curate and promote local and global research on intercultural learning • Generate new targeted research • Secure research partners. 	<ol style="list-style-type: none"> 1. Accessible contemporary and relevant information on intercultural learning provided to schools. 2. Informed school education policies on intercultural learning evidence base. 3. Strengthened intercultural learning in schools.

OBJECTIVES, TACTICS & OUTCOMES

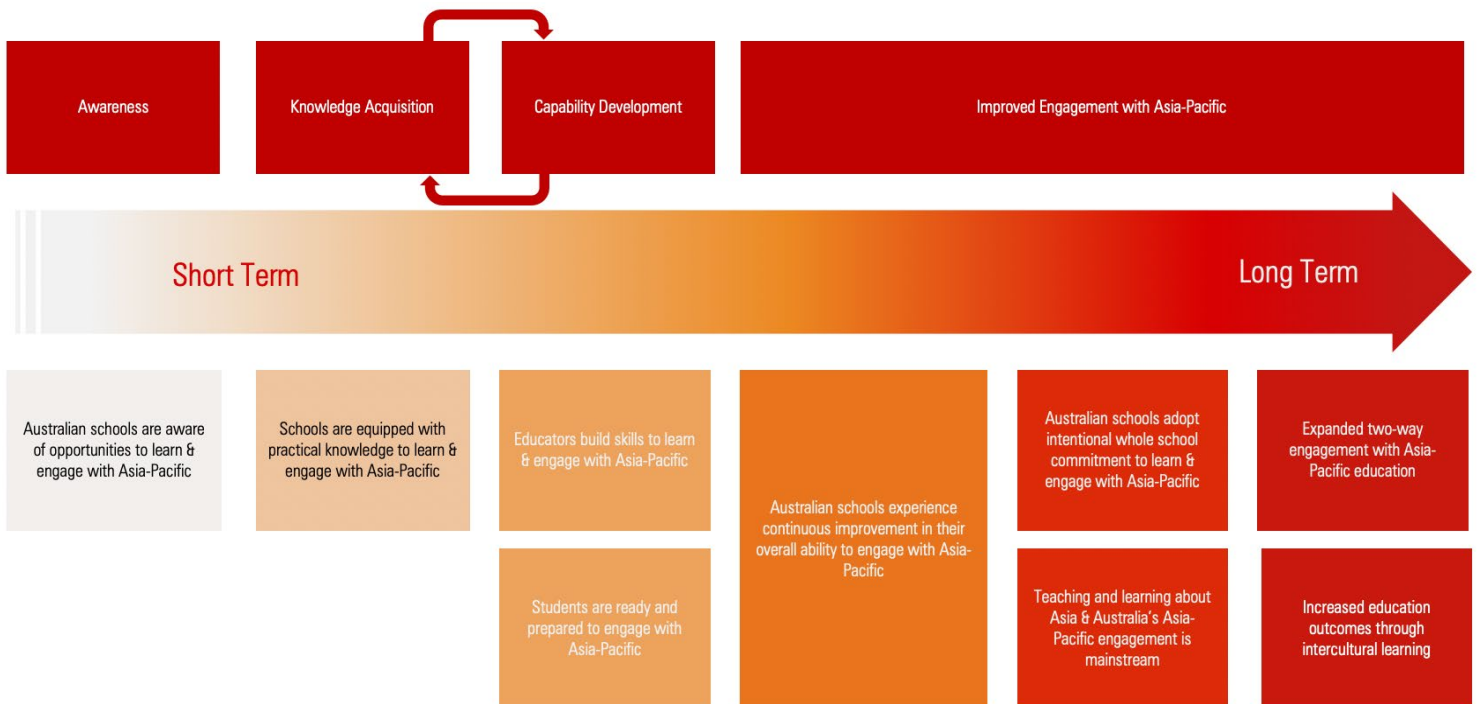
OBJECTIVE FOUR	AMPLIFY YOUTH VOICE	TACTICS	OUTCOMES
	<p>Amplify youth voice of school students to their wider community and peers across Asia-Pacific and ensure that young people’s perspectives on intercultural learning are heard by education stakeholders.</p>	<p>AEF will:</p> <ul style="list-style-type: none"> • Utilise AEF communications to amplify student voice • Review and re-align AEF curriculum resources to amplify student agency • Prototype a digital data platform on intercultural learning • Prototype a digital youth platform on global citizenship. 	<ol style="list-style-type: none"> 1. Deeper student knowledge and insights on Asia-Pacific developed. 2. Increased student opportunities to connect with experts and stakeholders provided. 3. Stronger school education relationships established for students through Asia-Pacific networks for learning.
	OBJECTIVE FIVE	ACTIVATE ADVOCATES	TACTICS
	<p>Activate advocates across all AEF networks and stakeholders to elevate Asia-Pacific education engagement in national and international policies and initiatives to increase intercultural learning.</p>	<p>AEF will:</p> <ul style="list-style-type: none"> • Utilise the AEF Council, Asialink and The University of Melbourne to advocate for intercultural learning in schools • Update the operation of our client databases • Develop a stakeholder and partner engagement schedule • Engage advocates across multiple media channels. 	<ol style="list-style-type: none"> 1. Strengthened school and government policies for intercultural learning developed. 2. Increased investment in intercultural curriculum and initiatives committed. 3. Expanded cooperation on intercultural learning between government, schools and other partners demonstrated. 4. Strengthened intercultural learning in schools.

AEF OUTCOME LOGIC

In aligning our shared work across Asialink, AEF will use an outcome logic scaffold so that we can communicate and scale our impact.

The outcomes of our strategic goals provide evidence of our impact. These will be staged for short, mid, and long-term milestones, especially for large scale projects with multiple participants and partners across a wide geography.

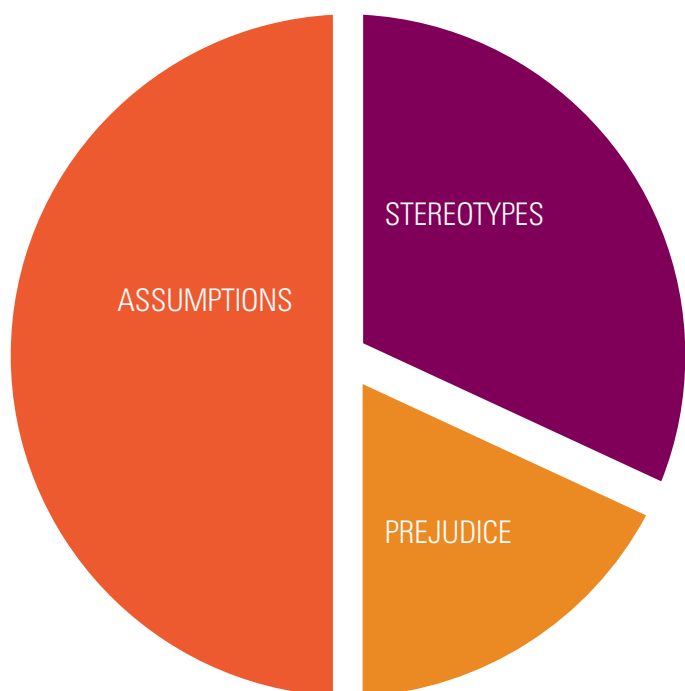
Data is only one way to measure our impact. Sharing the stories of success and effective engagement will be a companion piece to communicating how important intercultural learning is to a world-class education.



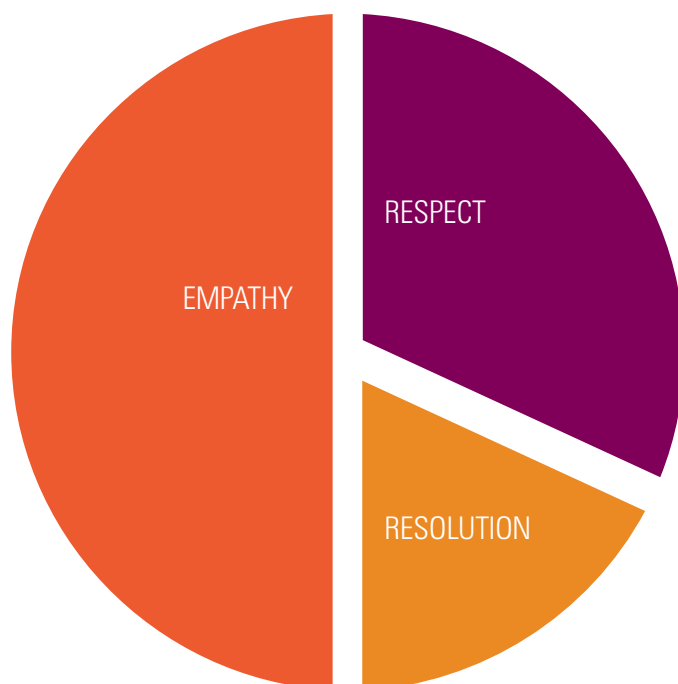
AEF INTERCULTURAL LEARNING FRAMEWORK

The AEF ICL Framework explores the balance between an individual's intercultural understanding with the shared practice of intercultural capability in reaching learning outcomes together.

INTERCULTURAL UNDERSTANDING MINDSET



INTERCULTURAL CAPABILITY SKILLSET



AEF will apply an Intercultural Learning (ICL) Framework across its programs and resources to assist in identifying and articulating the mindsets and skillsets of intercultural knowledge and experiences. Drawing on key outcomes from international research and curricula, the ICL Framework will underpin AEF's three program areas.

There are six ICL Framework dimensions exploring the challenges and strengths educators and students navigate and negotiate as intercultural learners. Each dimension has its own standards.

The ICL Framework's duality seeks better awareness of the negative barriers for individual understanding with positive abilities in working together across intercultural contexts and relationships.

ASSUMPTIONS

A lack of knowledge or experience. Assumptions are constant indications of learning gaps, interpretations, and information needs.

STEREOTYPES

A generalised understanding of cultures. Stereotypes are somewhat useful but can be skewed and present persistent challenges.

PREJUDICE

A bias against other cultures seeded by ignorance and fear. Prejudice is not based on rational reason or experience and is a distorted identity of others.

EMPATHY

An ability to listen, observe, and question with minimal bias. Empathy creates strong, lasting connections with other cultural contexts.

RESPECT

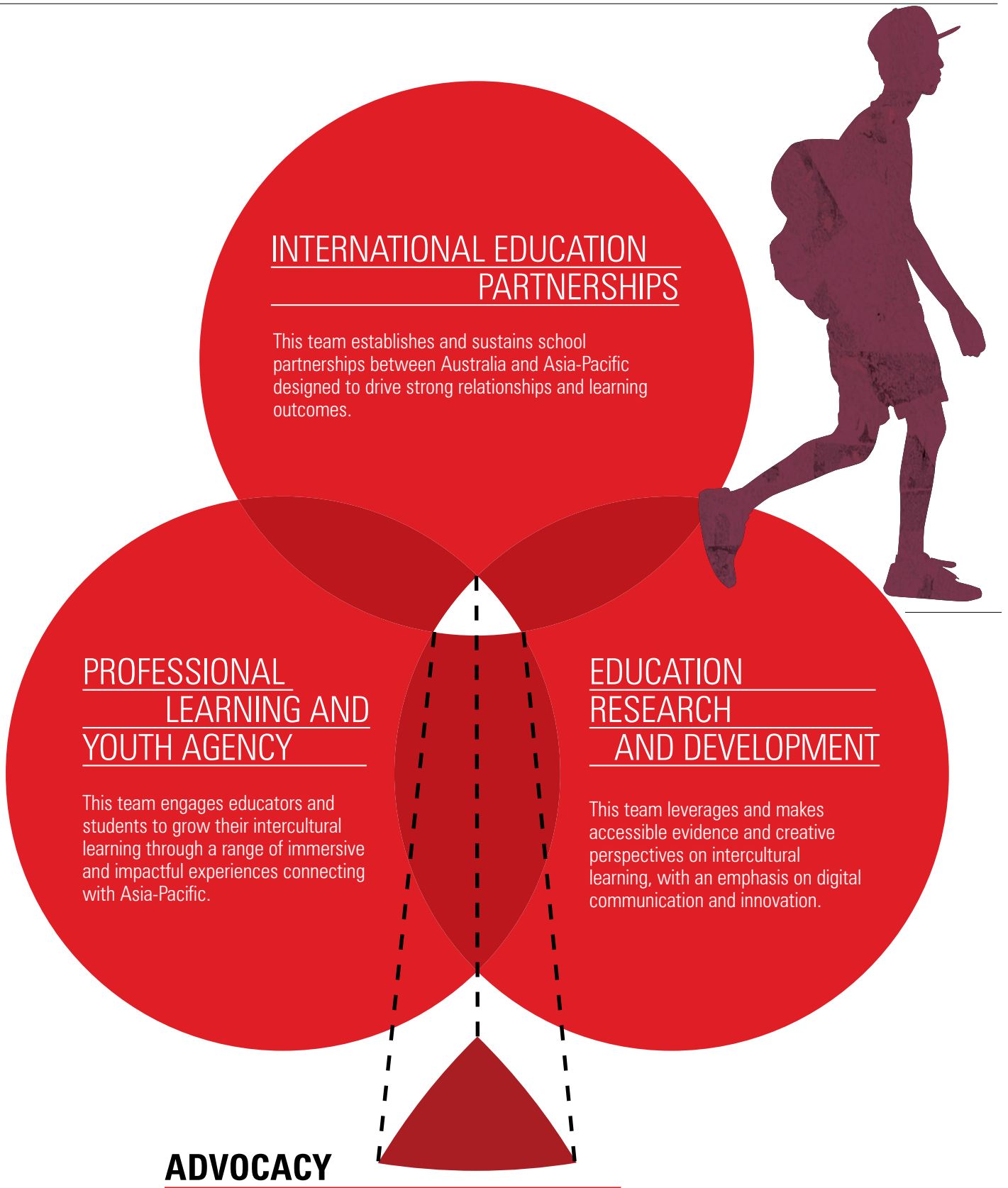
An ability to use appropriate cultural practices. Respect is an acknowledgement of other cultures and an openness to learn more.

RESOLUTION

An ability to reach a mutual outcome through intercultural learning. Resolution of a collaborative effort that builds long-term impact and relations.

AEF PROGRAM AREAS

AEF is structured with three interconnected teams.



AEF PROGRAM AREAS

INITIATIVE	FOCUS	DESCRIPTION	ENGAGEMENT
INTERNATIONAL EDUCATION PARTNERSHIPS (IEP)			
BRIDGE	School-to-school partnerships through teachers and school communities.	Facilitation of long-term, 1-1 school partnerships through reciprocal exchanges with targeted countries.	Over 12 months with immersion workshops, digital resources and coaching support.
NEXUS	School leaders and teachers investigate a key learning area and pedagogies.	Develop global networks with a shared focus on an aspect of learning and teaching to drive greater collaboration.	Over 12 months with workshops, digital course materials and webinars.
PNGAUS PARTNERSHIP SECONDARY SCHOOLS (PASS) INITIATIVE	School leader, teacher, and high school student cohorts across PNG and Australia collaborate on teaching and learning.	Collaborative program centred on building skills in communication, STEM, youth leadership, and school improvement.	Over 12 months with workshops, digital course materials, and webinars.
PROFESSIONAL LEARNING AND YOUTH AGENCY (PLYA)			
GROWING GLOBAL CITIZENS	Professional learning program for school leaders and teachers.	Investigation into global citizenship research and practice coupled with a school-based project.	Over 6-10 months with workshops and online tools.
GO GLOBAL YOUTH FORUMS	Student forums: <ul style="list-style-type: none"> Australia-ASEAN Forum Global Goals Forum STEMing from Asia Forum. 	Primary and secondary student programs on key themes using a range of formats and real-world scenarios.	One-day immersion. Delivered as face-to-face workshops or as online programs.
HARVESTED	Secondary program focused on preparing global citizens through agricultural learning.	Immersive 4-phase student program exploring agri-tech and Asia, with local links and projects.	Over 8-10 months through eight workshops (online and face-face) and site visits.
EDUCATION RESEARCH AND DEVELOPMENT (ERD)			
CURRICULUM AND RESEARCH STUDIES	Work with partners to collect, curate and analyse evidence and data to strengthen intercultural learning.	Curriculum reviews, horizon scans, demonstrated practice and data collection.	Dependent on scope of commissioned work.
INNOVATION AND DIGITAL SERVICES	Prototyping ways to understand and connect on intercultural learning.	Exploration of a youth platform (6 Worlds) and a school data platform (Proxemics) to expand networks and sharing.	Ongoing, iterative developments in digital creation of new approaches and perspectives.

ABOUT ASIALINK & AEF



Asia Education Foundation

Asia Education Foundation (AEF) provides school leaders, teachers, and students with the global perspectives and tools to amplify their intercultural skills and mindsets.

AEF delivers informative resources, national and international professional learning, innovative programs, and rich networks that connect Australian schools with more than 20 countries across Asia-Pacific.

Since 1992, AEF has been an initiative of Asialink at The University of Melbourne and partners with the Australian Government, state and territory education jurisdictions, education professional associations, business, and philanthropic supporters.

AEF EQUIPS EDUCATORS AND STUDENTS WITH THE INTERCULTURAL LEARNING AND GLOBAL PERSPECTIVES TO NAVIGATE A SHARED FUTURE WITH ASIA-PACIFIC.

AEF focuses its work on three interlinked approaches:

1. EQUIP EDUCATORS
2. ENABLE YOUTH
3. ENGAGE ADVOCATES

These three approaches are designed to be foundational elements of AEF offerings:

1. INTERNATIONAL SCHOOL PARTNERSHIPS
2. PROFESSIONAL LEARNING AND YOUTH AGENCY
3. EDUCATION RESEARCH AND DEVELOPMENT

Our programs and platforms are responsive, flexible, and highly effective education initiatives informed by evidence, built on collaboration, and focused on capacity building of educators and students around Australia and across the region.



Asialink is Australia's leading centre for the promotion of public understanding of the countries of Asia and of Australia's role in the region. We are a key provider of information, training and professional networks.

Our purpose is to build an Asia-capable, deeply Asia-engaged Australia through thought leadership and innovative programs that build knowledge, skills and partnerships.

WE DRIVE CREATIVE ENGAGEMENT BETWEEN AUSTRALIA AND ASIA TO BUILD A STRONG SHARED FUTURE.

AEF is underpinned by three strategic pillars of Asialink:

- INSIGHTS
- CAPABILITIES
- CONNECTIONS.

GET IN CONTACT

ASIA EDUCATION FOUNDATION

WWW.ASIAEDUCATION.EDU.AU

ASIALINK CENTRE
LEVEL 4 SIDNEY MYER ASIA CENTRE
THE UNIVERSITY OF MELBOURNE
VICTORIA 3010

T: +61 3 8344 3590

E: AEF-SUPPORT@ASIALINK.UNIMELB.EDU.AU

